

This article was downloaded by: [Tomsk State University of Control Systems and Radio]

On: 20 February 2013, At: 13:11

Publisher: Taylor & Francis

Informa Ltd Registered in England and Wales Registered Number: 1072954

Registered office: Mortimer House, 37-41 Mortimer Street, London W1T 3JH, UK



## Molecular Crystals and Liquid Crystals

Publication details, including instructions for authors and subscription information:

<http://www.tandfonline.com/loi/gmcl16>

### Subst.-4[benzylidene-amino]azobenzene

Version of record first published: 03 Jan 2007.

To cite this article: (1984): Subst.-4[benzylidene-amino]azobenzene, Molecular Crystals and Liquid Crystals, 115:1-4, 266-266

To link to this article: <http://dx.doi.org/10.1080/00268948408073764>

PLEASE SCROLL DOWN FOR ARTICLE

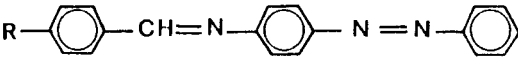
Full terms and conditions of use: <http://www.tandfonline.com/page/terms-and-conditions>

This article may be used for research, teaching, and private study purposes. Any substantial or systematic reproduction, redistribution, reselling, loan, sub-licensing, systematic supply, or distribution in any form to anyone is expressly forbidden.

The publisher does not give any warranty express or implied or make any representation that the contents will be complete or accurate or up to date. The accuracy of any instructions, formulae, and drug doses should be independently verified with primary sources. The publisher shall not be liable for any loss, actions, claims, proceedings, demand, or costs or damages whatsoever or howsoever caused arising directly or indirectly in connection with or arising out of the use of this material.

SUBST.-4-[BENZYLIDENE-AMINO]-AZOBENZENE

4-[4-Subst.benzylidene-amino]-azobenzenes



	R	K		S <sub>B</sub>		N		I		Ref	
		Ph	Tr	Ph	Tr	Ph	Tr	Ph	Tr	Ph	Tr
2536	C <sub>3</sub> H <sub>7</sub> S <sup>-</sup> <sub>a</sub>	.	111.1	.	[104.6]	.	113.8	.	.	15	15
			15.8	α30.5	4.46	α7.5	0.27	α8.2	.	15*	15
		ρ1.145	R5.07	ρ1.1203	R1.42	ρ1.0886	R0.085	ρ1.0825	118	15*	15
2538	CH <sub>3</sub> O <sup>-</sup>	.	149	.	102	.	184	.	.	29*	29*
						ρ1.065	1.46	ρ1.049	190	60*	29*
						ρ1.065	R0.49	ρ1.04	200		

a See also ref.19